

Quote Roller Contest Proposal

Prepared For

Quote Contest

Quote Roller

Created By

Dustin Gruetter

DC Building

888-975-2057

dustin@dcbuilding.com

<http://www.dcbuilding.com>



Your Proposal

March 24, 2014
Proposal Submitted To:

Quote Contest
Anytown, CA

DC Building specializes in the design and construction of custom, all wood barns, barn homes, and equestrian facilities. If you're looking for an efficient, cost effective, and streamlined approach for your structure; our innovative design teams are here to simplify your process.

If you choose DC Building for your barn home design, a design specialist will be assigned to you to answer any questions you might have throughout the entire process. You will be able to work closely with our drafting and design experts via web meetings. Our cloud-based project management system helps you visualize your structure before you commit to building. Once your designs are completed, they belong to you, whether you choose us as your builder or not.

We've designed and built dozens of custom structures across the country. Check out our gallery of completed projects and see what our satisfied customers have to say about us.

Sincerely,

Dustin Gruetter
DC Building



Similar Projects



This barn home in Camarillo, California consists of a stately 36' x 60' residence, a 24' x 48' connecting garage, and a 36' x 60' barn with a loft and a shed roof.

This gorgeous custom barn home in Jerseyville, Illinois features 3,744 square feet of living space, a full loft, and cedar board and batten siding



This custom barn home in Newnan, Georgia will have a full loft living quarters over a tack room, horse stalls, and multiple shed roofs for storage.

Client Testimonials

Last Chance Ranch in West Linn, Oregon

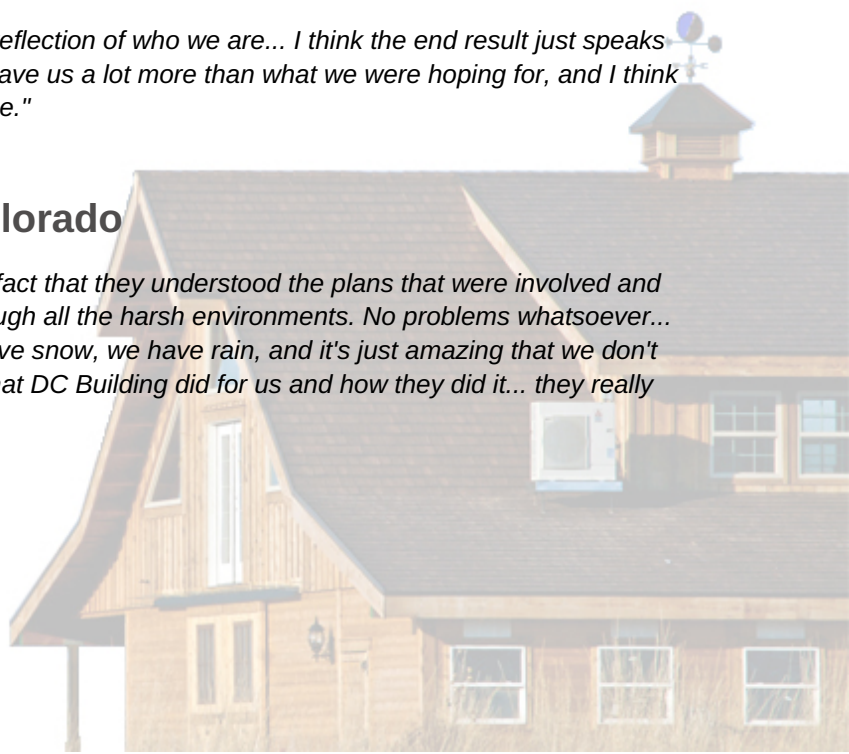
"They really did give us something that is a true reflection of who we are... I think the end result just speaks for itself. It's just a really great structure... They gave us a lot more than what we were hoping for, and I think that's the highest compliment you can pay anyone."

-Brian Sonnenberg, Oregon

Apartment Barn in Fairplay, Colorado

"The reason that we chose DC Building was the fact that they understood the plans that were involved and the future vision that we had... They worked through all the harsh environments. No problems whatsoever... We have 100 mile an hour winds at times, we have snow, we have rain, and it's just amazing that we don't have any issues whatsoever... We appreciate what DC Building did for us and how they did it... they really took care in what they were doing."

-Satisfied Client, Colorado



The Design Process

Initial Design Meeting

First, you'll be introduced to your design specialist, who will get familiar with your general vision for the project and put some sketches down on paper. Next, you'll have an initial design meeting with the team via an online web meeting. During this process, our skilled draftsman makes modifications to the plans while our design specialist puts forward ideas and examples for your approval. Your DC Building team will not only make real-time changes to your conceptual design based on your input, but will also explain how these changes can impact your overall design and the cost of the project.

Design Development Stage

This is where the fun starts and our team brings your unique vision to life! Our designers work meticulously to create detailed floor plans, elevations, and window, door, and construction details tailored to your specific project. This process can be completed in as little as a week, but time frames can vary by project and generally range from one to four weeks. At this stage, we arrange another web conference to present your drawings to you and go over the details of your project. You will be able to red line drawings and send them back to us for your free revision!

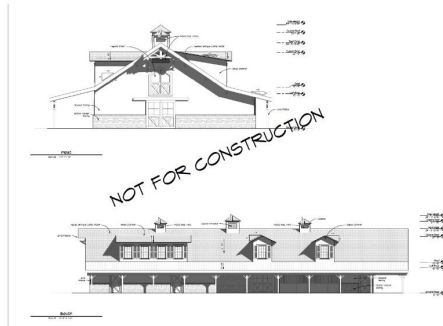
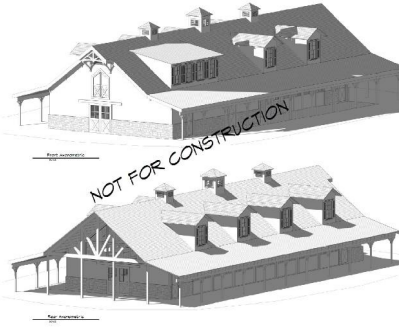
Phase 1	Client and the design specialist will connect on the building layout and design, talk about floor plans, window placement and roofing types, etc.
Phase 2	Design team begins inputting that information into Revit architectural software
Phase 3	Design team issues first set and the client will go through a red line meeting with their DC Building representative to make any corrections and add details where needed.
Phase 4	Design team issues second (and probably final) set of drawings to approve and begin the MEP process (if the client opts into the MEP details).
Phase 5	MEP drawings are issued over approved design and details are completed.
Phase 6	Drawings are complete and sent out. Renderings and perspectives are completed and sent out with a final set of approved drawings.



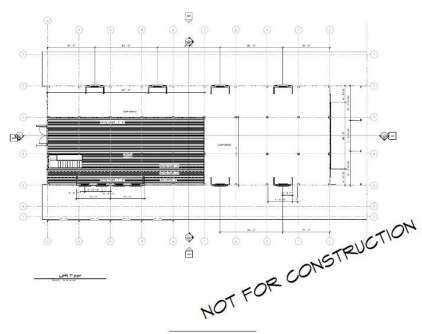
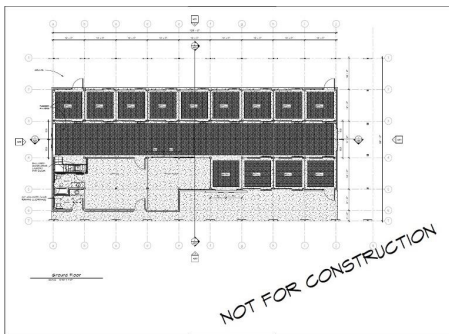
Your Design Package

Your design package will include the following:

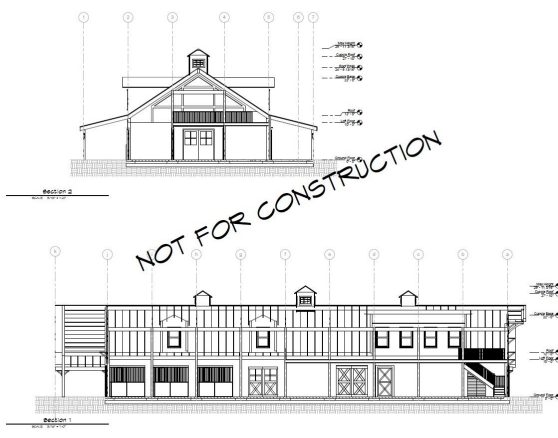
Elevations



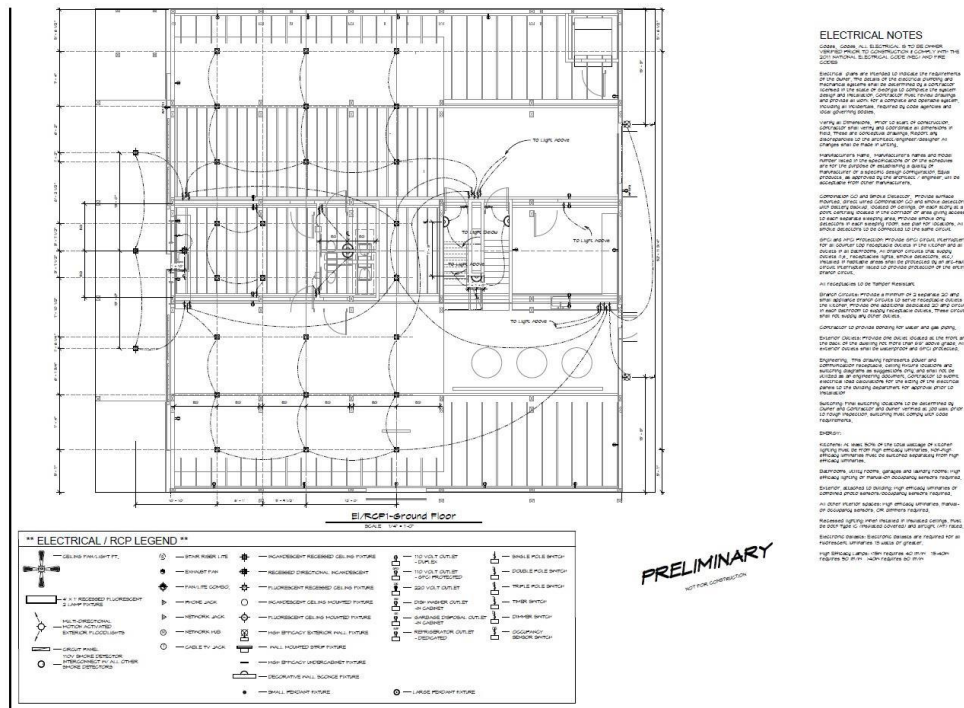
Floor Plans



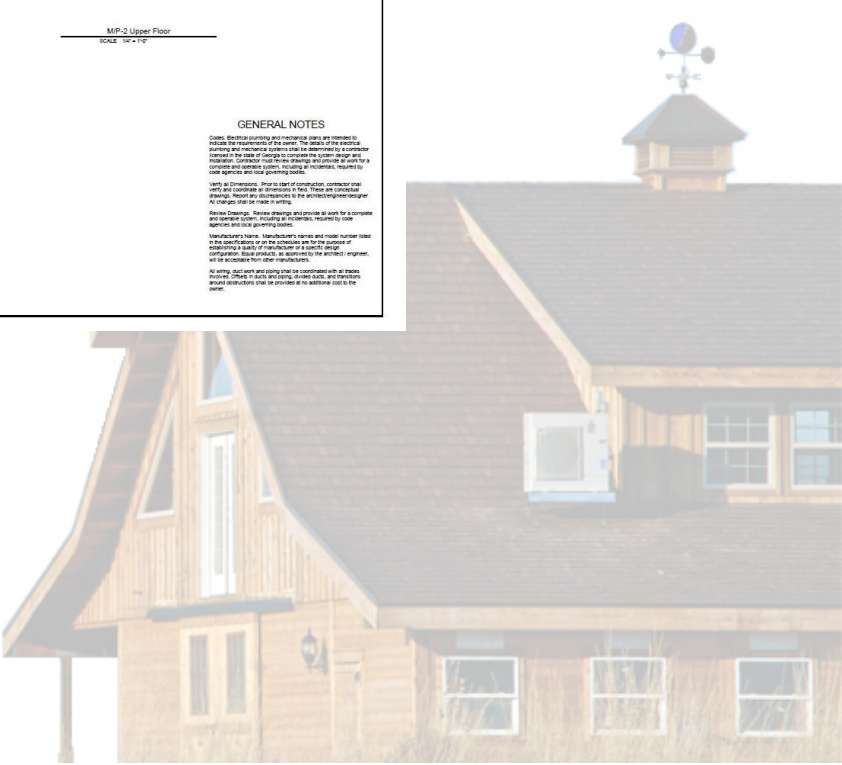
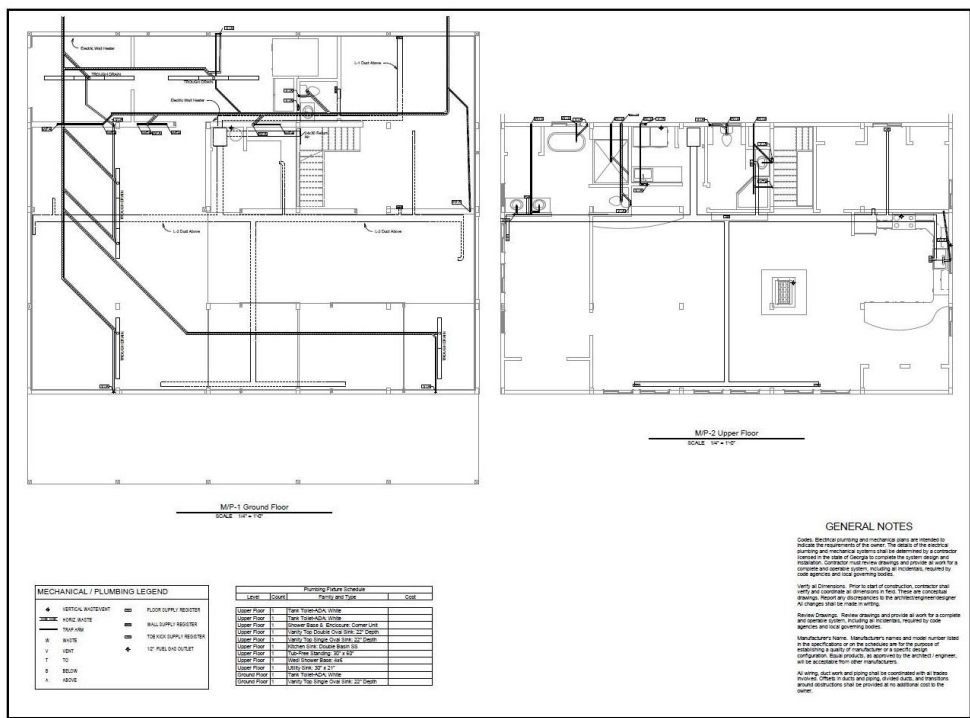
Cross Sections



Electrical Plans



Mechanical Plans



Scope of Work

Design for:

40' x 60' Custom Barn Home

(2) 10' x 60' Shed Roofs

Full 40' x 60' Loft

(1) 12'x60 Front Porch

Design will include:

- Floor Plan
- Elevations
- Electrical Plan
- Plumbing Plan
- Architectural Details
- Shed dormer in the loft over the office/tack side, and dormer over the stalls.
- Hay loft that will not go over the stalls – only over the aisle where office and tack room meet.
- 9-12 roof, shed roof eaves with 10' clearance.
- Cupolas – center with windows and two vents.
- Some timber frame features on the half without loft.



Fees

Services

Elevations and Floor Plans **\$2,495.00**

Includes:

- Site Plan
- Floor Plans
- Elevations
- Sections
- (2) 3D Views
- Window and Door Schedule
- Bid Set
- Product Specifications (Siding, Roofing, etc.)

Construction Details **\$1,995.00**

Includes:

- Electrical & Lighting Plans
- Mechanical Plans
- Plumbing Plans
- Structural Details
- Architectural Details
- Annotations & Dimensions
- Permit and Build Set

Engineering **\$995.00**

Plans will be stamped by a licensed engineer.

Total cost: \$5,485.00



Terms and Conditions

Price includes all architectural drawings needed for estimating, permitting, and construction. Price includes (1) revision.

Payment Schedule

Deposit	\$2,742.50
Upon completion of drawings	\$2,742.50

*Design fees are fully credited to the cost of construction if you choose DC Building as your builder.

Signed by:

Quote Roller

Date

